

# OUR ENTREPRENEUR & SOCIAL ENTREPRENEUR PACKAGE FOR YOU

SPACE ALONE IS SIMPLY SPACE,  
WHAT TURNS OUR SPACE INTO A  
DYNAMIC COMMUNITY IS YOU!

Your Social Innovation Hub  
Ballymun Civic Office  
Main Street  
Ballymun  
Dublin 9

Tel: 01 842 3612  
Email: [Annabelle@innovatedublin.org](mailto:Annabelle@innovatedublin.org)  
Website: [www.innovatedublin.org](http://www.innovatedublin.org)

## HUBBERS PACKAGE: entrepreneurs & social entrepreneurs

### Welcome to the Innovate Ballymun Hub

We are a co-working and events space for a community of people from different professions and backgrounds who are taking action to drive positive social and environmental change. They may be entrepreneurs, social entrepreneurs, techies, creatives, students, professionals and many more-- anyone making a solution for a better world.

Through the Hub, Innovate Ballymun helps members consider the social and environmental impact of their business practices, while also pushing nonprofits to become self-sustaining through collaboration and more efficient business models.

Our Hub is a shared work space which is specifically designed to promote collaboration and innovation. It is development space and launch pad for those who wish to make a change, providing members with tools to accelerate their success. In particular, it provides social innovators with all the tools and trimmings needed to grow and develop new ventures; it is a place to access experience, knowledge, finance and markets and it a place for making connections.

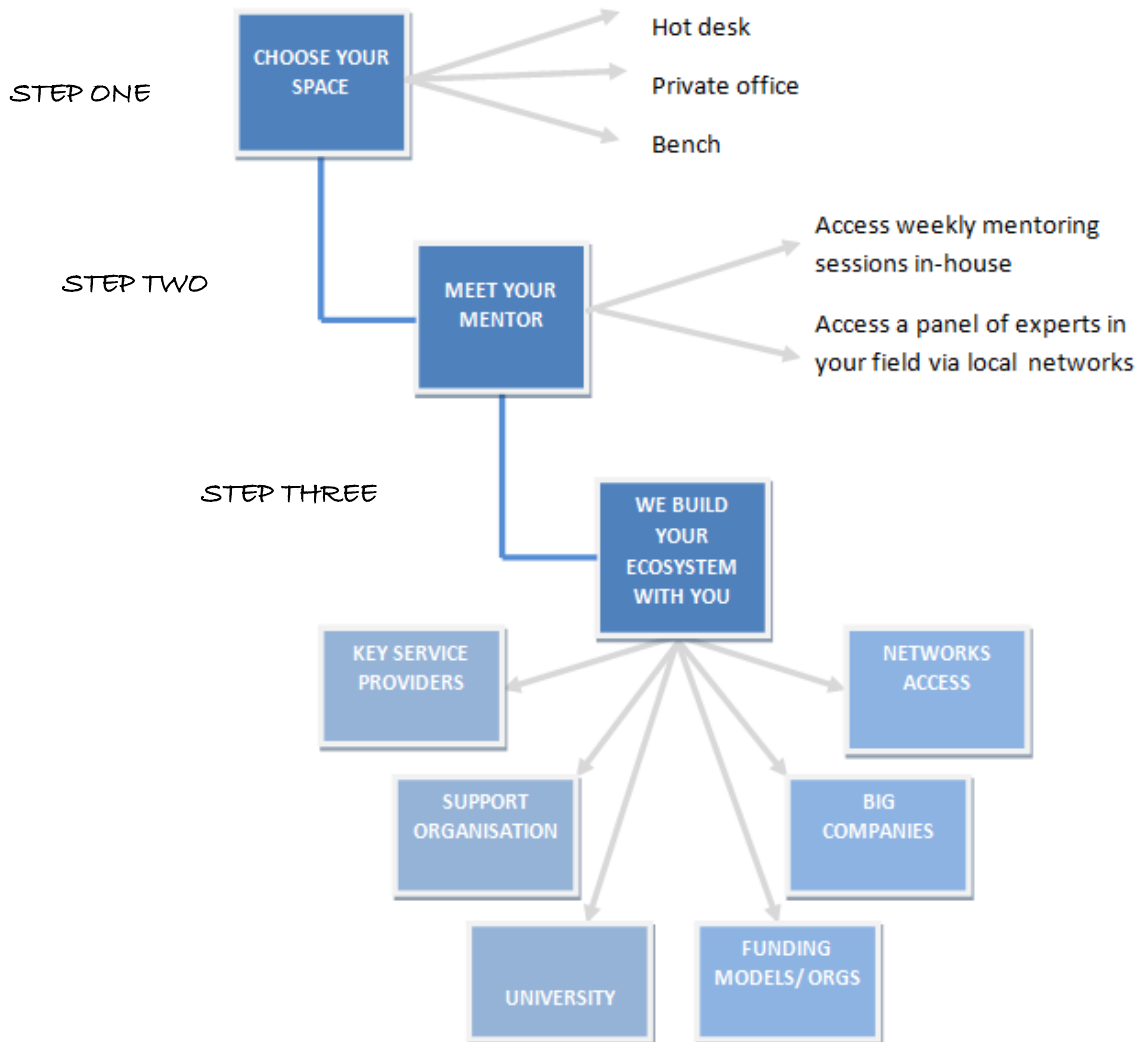
Part innovation lab, part business incubator, and part community centre, we offer members a unique ecosystem of resources, inspiration, and collaboration opportunities to grow. We look to help people connect with, learn from and help each other to realise their ideas.

The Hub offers members access to 350 square meters of creative space to work, meet, learn, collaborate and play. We combine the best of a cafe, innovation lab, business accelerator, serviced office and community centre to create a place for meaningful encounters, productive work sessions and inspiration.

Membership gives you a professional office right in the centre of Ballymun and only 7 kilometres from Dublin city centre. Members benefit from flexible access to our serviced coworking space and lively coworking community; active hosting of relationships and information sharing; and access to a broad programme of free community building events - all designed to help develop your social and intellectual capital.

Details on the various membership packages we offer can be found on pages 7 - 8.

# HUBBERS PACKAGE: entrepreneurs & social entrepreneurs



## MEMBER EVENTS & GIVING BACK

- **SHARE SUCCESS:** rotational meetings at various hubs, co-working spaces across Dublin City – register and drop-in!
- **TAKE TEN:** Ten creative speaker session run between January to May and August to December
- **MEMBER EVENINGS:** Food, space and good company, once a month get-together with your fellow ‘hubbers’ and enjoy sharing experiences and building networks.
- **YOUR COMMUNITY IMPACT:** Give up to 1 day each month to make your mark on the community.

# HUBBERS PACKAGE: entrepreneurs & social entrepreneurs

## OUR OFFERING TO YOU

*You can avail of all the member benefits (see below) or just make our space yours.*

### *STEP ONE: Choose your space*

We have a variety of work spaces for you to choose from. See pages 7-8 for details.

### *STEP TWO: Meet your mentor*

Each Hubber will be offered scheduled mentoring sessions with one of our experienced business mentors. All our mentors have experience in setting up and running businesses so they understand the challenges and frustrations involved. Your mentor's sole focus is to support you in whatever areas you require to ensure your business idea grows into a successful enterprise. You choose what you want to focus on which could include some of the following areas:

- Sales and marketing (including preparation for sales presentations)
- Strategic planning
- Financial management
- Business development (including expansion and diversification)
- Resourcefulness and resilience
- Self confidence
- Good organisational tools including time management and project management
- Application for financial loans

Each week you commit to actions to work on between sessions that are relevant to you and these actions are discussed at the beginning of the next session.

### *STEP THREE: Build your ecosystem*

What is your ecosystem of support and what is available. Supports include:

- *Enterprise Agencies & Services*  
Meetings set-up for you with Local agency supports, Partnership, LEO, Enterprise Ireland, Department of Social Protection.
- *Financial Management*  
Relationships with various financial advisory bodies including local bank branches, for initial one to one discussions.

## HUBBERS PACKAGE: entrepreneurs & social entrepreneurs

- *Research & Marketing*

Access to research and marketing experts through Dublin City University.

- *Funding (direct and indirect)* <http://www.djei.ie/enterprise/businesssupport.htm>

Information on access to funding to meet you and your business needs and connections made: Department of Social Protection, Enterprise Ireland, Microfinance Ireland, IDA, Local Enterprise Office.

- *Network Access*

Introductions to local and national business networks including: Ballymun4Business, North Dublin Chamber of Commerce, Dublin City Chamber, LEO Dublin City Women in Business Network, Irish Social Enterprise Network.

- *Strategic & Operation Development*

Business planning, strategic planning and operational development planning will be supported in-house through our trained Hub team.

# HUBBERS PACKAGE: entrepreneurs & social entrepreneurs

## MEMBER EVENTS & GIVING BACK

*Share Success:* Right across Dublin there is a fantastic array of enterprise space, hot-desking and co-working space with entrepreneurs and social entrepreneurs in similar states of start-up as you. Share Success is affiliated with several spaces across Dublin to allow you to meet and network with entrepreneurs and social entrepreneurs across a range of disciplines. It runs on an ad hoc basis at various locations across the city.

*Take Ten:* Our topical speaker sessions, running throughout the year, are designed to provide thought provoking, innovative ideas for the entrepreneur and social entrepreneur from people across industry on their journey and experiences. Examples of topics include:

- Entrepreneurship and Not-For-Profit Organisations
- Introduction to Design Thinking
- How to use a variety of Social Media platforms to promote your business or social enterprise
- Facilitation techniques to make your business successful
- Leadership workshops
- Tips and tricks to maximise your crowdfunding
- Lessons from entrepreneurs who failed and survived

*Member Evenings:* Food, and good company, once a month get-together with your fellow 'hubbers'.

*Your Community Impact (optional):* Whether you are an IT expert who can fix one PC a month for an individual in the community, or you can give a few hours to a local school on your experience in business, all we ask is that you consider giving something back to our community up to a few hours each month.

## HUBBERS PACKAGE: entrepreneurs & social entrepreneurs

### CHOOSE YOUR SPACE

All packages allow access to our member package and facilities (kitchen, shower, toilets, chill-out zone, meeting rooms, board room and private phone booth).

#### Work Benches \_\_\_\_\_

Bench use €10 per day: Plug in your laptop, connect to our high speed internet connection and work away.

#### Individual Node \_\_\_\_\_

€175 per month: Designated desk space for one.

#### Desk Nodes \_\_\_\_\_

€700 per month: Designated desk space for your team of four.

#### Offices \_\_\_\_\_

€875 per month: Our offices have ample space for two/three people and storage or you can opt to have one person and a nice meeting room table!

#### Special offerings \_\_\_\_\_

If you are under 25 years old or you are receiving support from social welfare, please call us to discuss your requirements and we will work with you to come up with a package to meet your needs.

# HUBBERS PACKAGE: entrepreneurs & social entrepreneurs

## OUR PACKAGES - WHAT YOU GET WITH YOUR SPACE

Work Benches and Special Offerings for under 25s are charged at a daily rate and can be booked on a daily basis. Individual Nodes must be booked for a minimum of one month. All other membership contracts are for a minimum of 6 months. 30 days notice is needed to cancel or change all contracts of one month's duration or longer.

Membership packages	Work Benches	Individual Node	Desk Node	Offices	Special Offerings for under 25s
Use of work space	Book per week	Unlimited hours for minimum 1 month	Unlimited hours for minimum 6 months	Unlimited hours for minimum 6 months	Book per week
Access to HubNet	✓	✓	✓	✓	✓
Free access to SME support services and events in Hub	✓	✓	✓	✓	✓
Free mentoring	✗	✓	✓	✓	Negotiable
Free meeting rooms	✗	✓	✓	✓	✗
Discounted events space	✓	✓	✓	✓	✓
Registered address	✗	✓	✓	✓	✗
Dedicated phone line	✗	Free line rental.	Free line rental.	Free line rental.	✗
Dedicated Storage	✗	✓	✓	✓	✗
Price €/month	€10 (per day)	€175	€700	€875	Negotiable